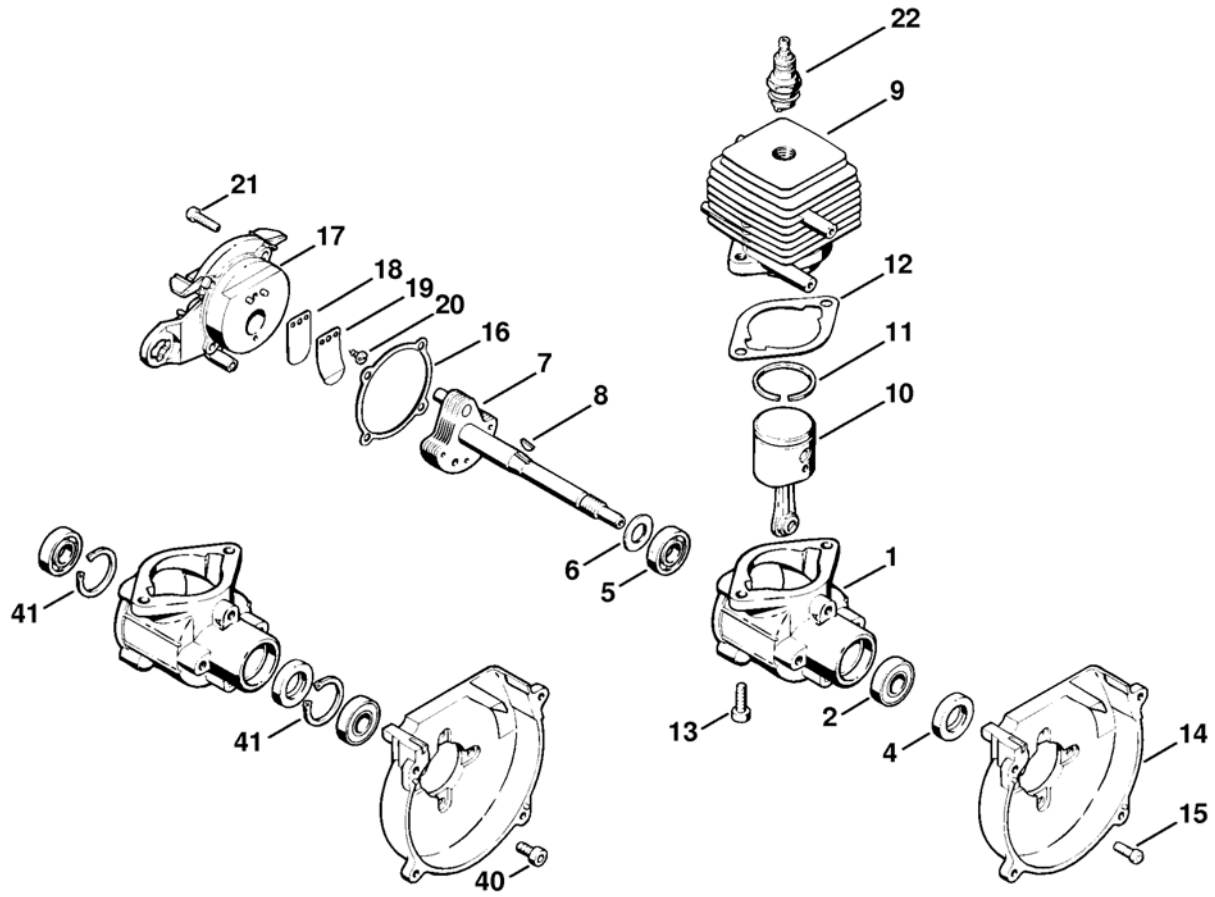


Illustration

A Crankcase, Cylinder

Printed from MediaCat



342ET030 SC

Illustration

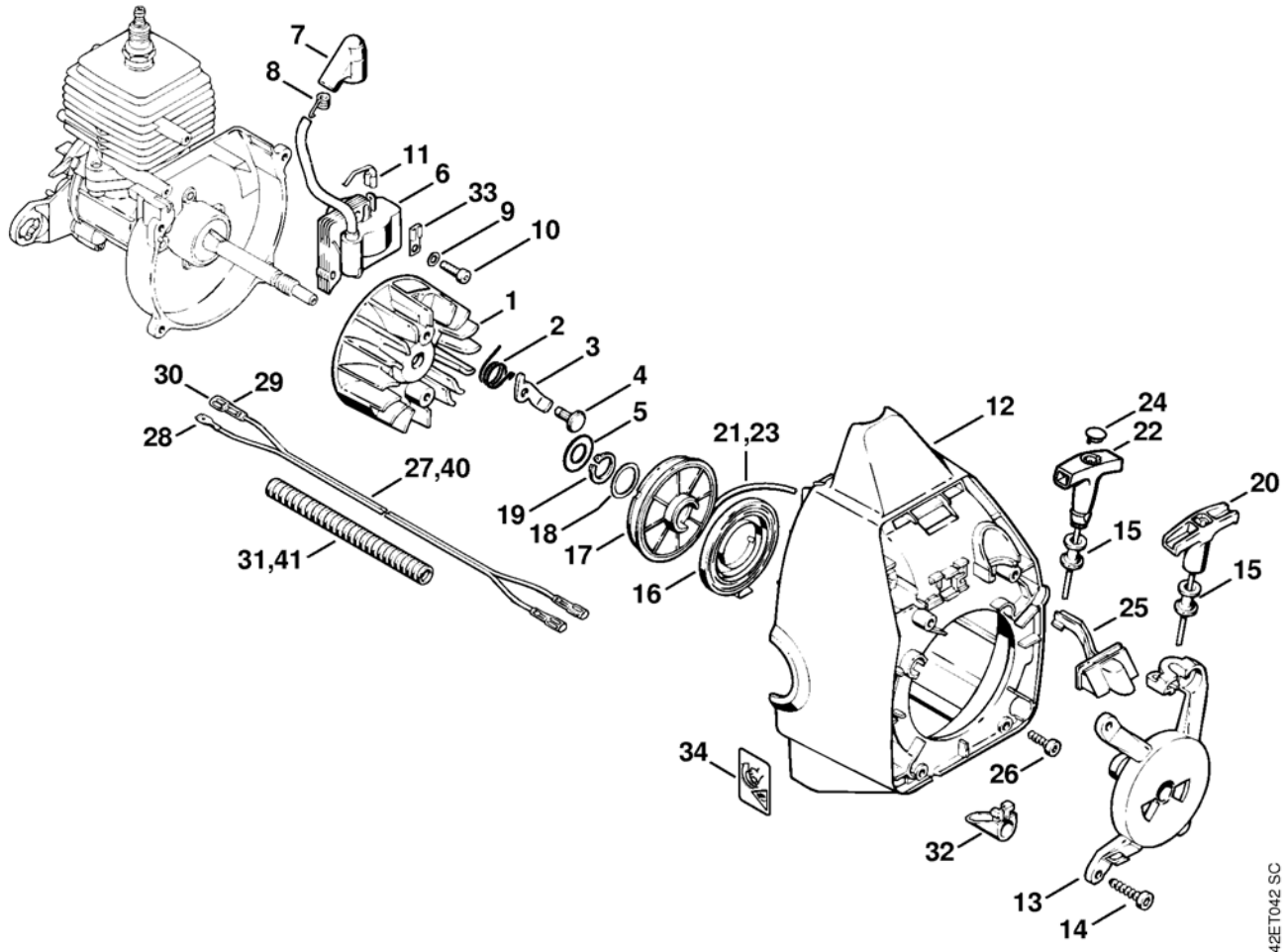
A Crankcase, Cylinder

Reference	Item number	Qty	Description
	4130 020 0205	1	Shortblock □ 1 - 15
1	4130 020 2105	1	Crankcase □ 2 - 8
2	9503 003 9955	1	Grooved ball bearing 0.5x1.125x0.312"
4	9633 003 9985	1	Oil seal
5	9503 003 9957	1	Grooved ball bearing 0.5x1.125x0.312"
6	9291 021 3932	1	Washer 23.1x12.8x0.9
7	4130 030 0400	1	Crankshaft (25.2005) □ 8
8	4130 036 8600	1	Woodruff key
9	4130 020 1200	1	Cylinder with piston Ø 35 mm □ 10, 11
10	4130 030 2000	1	Piston with connecting rod □ 11
11	4130 034 3000	1	Piston ring
12	4130 029 2300	1	Cylinder gasket
13	9022 341 1310	2	Spline screw IS-M6x18
14	4130 084 1150	1	Spiral housing
15	4130 028 0205	4	Spline screw TT 5.2x14.3
16	4130 029 0500	1	Gasket
17	4130 020 0500	1	Diaphragm carrier □ 18 - 20
18	4130 141 4100	1	Diaphragm
19	4130 141 2400	1	Support plate
20	9099 021 2360	1	Self-tapping screw 3.5x9.5
21	4130 028 0200	4	Spline screw TT 4.8x19
22	4112 400 7001	1	Spark plug NGK BMR 6A
22	0000 400 7002	1	Spark plug AC CSR 45
40	* 9022 341 1260	4	Spline screw IS-M6x12 (17.1994)
41	* 9456 621 3255	2	Circlip (17.1994)

(1) FS 36, (2) FS 40, (3) FS 44, (4) FS 44 R

Illustration

B Ignition system, Rewind starter



342ET042 SC

Illustration

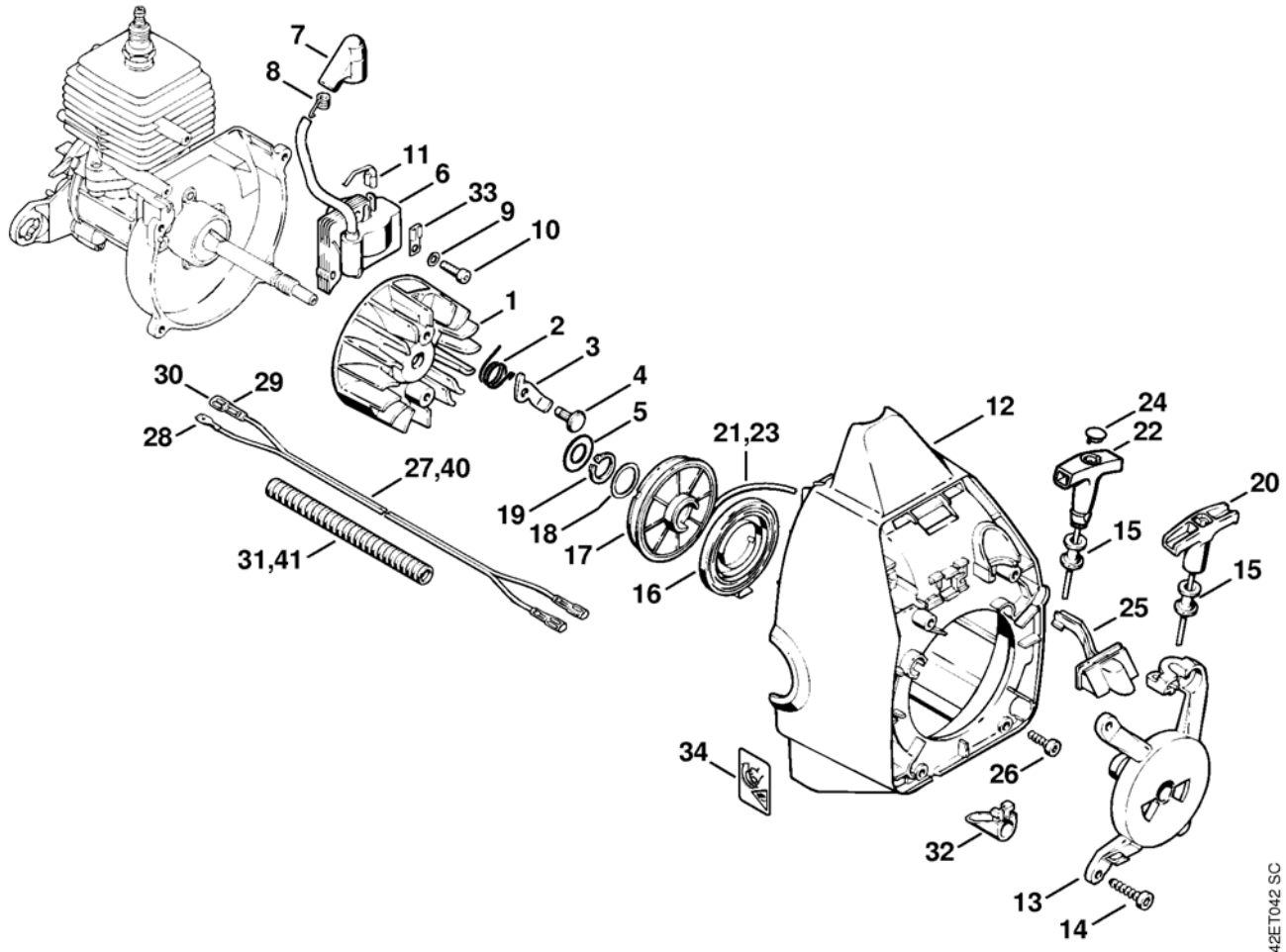
3 Ignition system, Rewind starter

Reference	Item number	Qty	Description
1	4130 400 1250	1	Flywheel (25.2005) □ 2 - 5
2	4130 998 1400	2	Torsion spring
3	4130 195 7200	2	Pawl
4	1114 195 7800	2	Pin
5	0000 958 0924	1	Washer
6	4130 400 1300	1	Ignition module □ 7, 8
7	1130 405 1000	1	Spark plug boot
8	0000 998 0614	1	Torsion spring
9	9291 021 0100	2	Washer 4.3
10	9022 371 0710	2	Spline screw IS-M4x20
11	4130 442 1601	1	Contact spring (1,2)
	4130 007 1028	1	Rewind starter kit □ 12 - 21
12	4130 084 1002	1	Fan housing
13	4130 195 0700	1	Rewind starter housing
14	9075 478 4155	4	Pan head self-tapping screw IS-D5x24
15	4130 084 9100	1	Bushing
16	4130 195 1600	1	Rewind spring
17	4130 195 0400	1	Rope rotor
18	0000 958 1804	1	Washer
19	9455 621 1670	1	Circlip 16x1
20	4130 195 3400	1	Starter grip
21	4130 195 8200	1	Starter rope Ø 3.5x850 mm
	0000 930 2203	1	Starter rope Ø 3.5 mm x 30.5 m (A,B)
22	0000 190 3400	1	Starter grip ElastoStart Ø 3 mm (B) □ 23, 24
23	0000 195 8200	1	Starter rope Ø 3x800 mm (B)
	0000 930 2208	1	Starter rope Ø 3 mm x 30.5 m (A,B)
24	0000 195 7000	1	Cap (B)
25	4130 430 2000	1	Slide (1,2) □ 11
26	4130 028 0200	4	Spline screw TT 4.8x19

(1) FS 36, (2) FS 40, (3) FS 44, (4) FS 44 R

Illustration

B Ignition system, Rewind starter



342ET042 SC

Illustration

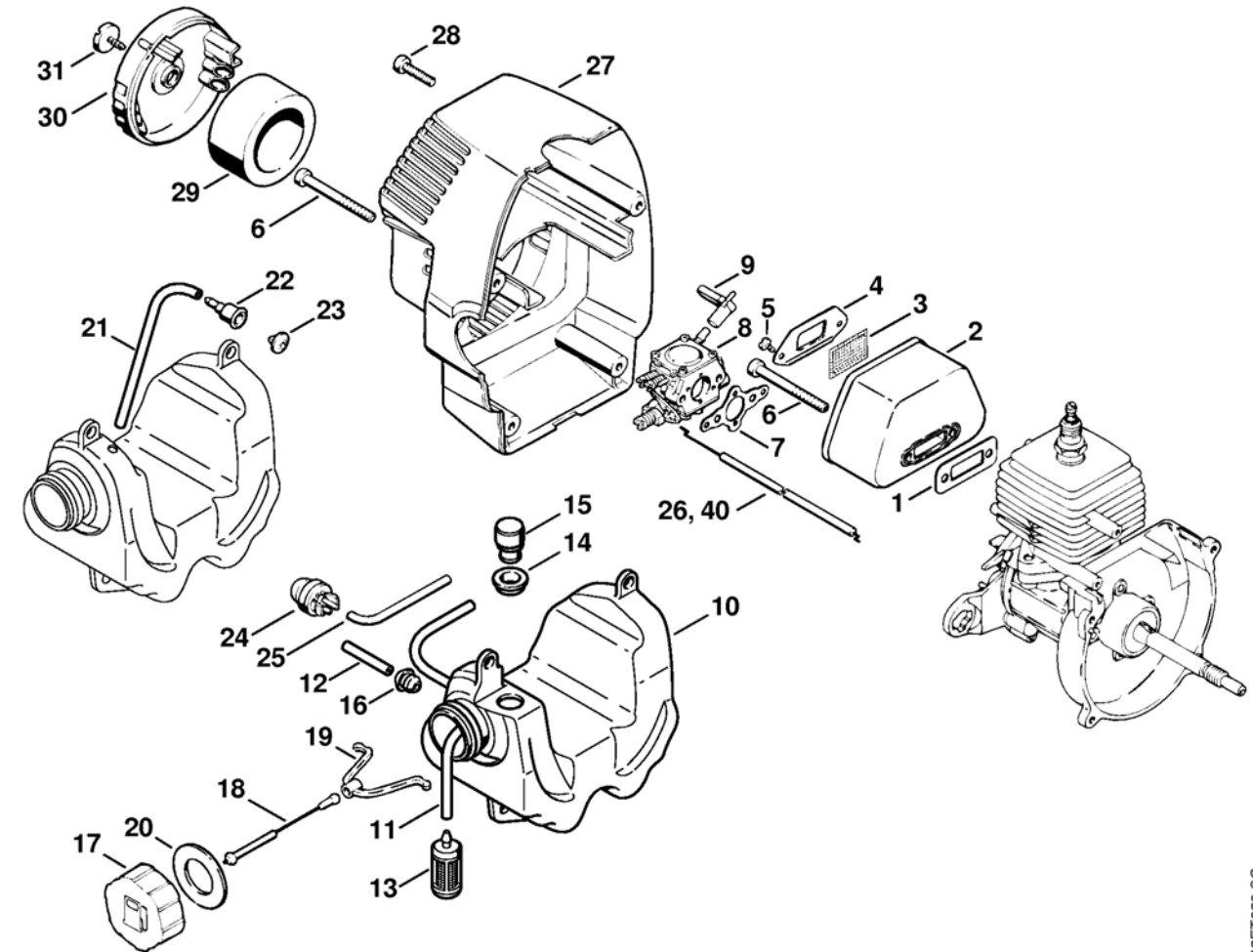
3 Ignition system, Rewind starter

Reference	Item number	Qty	Description
27	4130 440 1110	1	Short circuit wire 600 mm / 23.6" □ 28 - 30
28	0751 030 8454	1	Spade terminal
29	0751 030 8404	1	Terminal socket 6.3-1
30	0751 030 8471	1	Grommet
31		1	Hose 130 mm / 5 1/8"
	4203 711 7201	1	Hose 960 mm / 37 13/16"
32	4130 182 2100	1	Support
33	4119 431 6700	1	Terminal socket (1,2) D, F
33	4119 431 6700	1	Terminal socket (3,4)
34	0000 967 3693	1	Warning pictogram Filler cap USA, CDN
40	* 4130 440 1100	1	Short circuit wire 660 mm / 26" (2,3,4) (17.1994) □ 28 - 30
41	*	1	Hose 220 mm / 8 11/16" (2) D, F (17.1994)
41	*	1	Hose 220 mm / 8 11/16" (3,4) (17.1994)
	* 4203 711 7201	1	Hose 960 mm / 37 13/16" (17.1994)

(1) FS 36, (2) FS 40, (3) FS 44, (4) FS 44 R

Illustration

C Muffler, Shroud



342ET029 SC

Illustration

© Muffler, Shroud

Printed from MediaCat

Reference	Item number	Qty	Description
1	4130 149 0600	1	Exhaust gasket
2	4130 140 0605	1	Muffler
2	4130 140 0600	1	Muffler USA, AUS, CDN □ 3 - 5
3	4130 141 9000	1	Screen
4	4130 145 3000	1	Screen frame
5	9099 021 2360	2	Self-tapping screw 3.5x9.5
6	9075 478 4265	4	Pan head self-tapping screw IS-D5x60
7	4130 129 0900	1	Gasket
8	4130 120 0601	1	Carburetor WT-160 B
8	4130 120 0603	1	Carburetor WT-492A
9	4130 123 7300	1	Lever
10	4130 350 0404	1	Fuel tank □ 11 - 20
11		1	Hose 3.1x5.7x260 mm (D)
	0000 930 2803	1	Hose 3.1x5.7 mm x 1 m (A,B)
12		1	Hose 2.2x5.4x35 mm (D)
	0000 930 2802	1	Hose 2.2x5.4 mm x 1 m (A,B)
13	0000 350 3502	1	Pickup body
14	4223 353 9201	1	Grommet
15	4223 350 5802	1	Tank vent
16	0000 989 0516	2	Grommet
17	4130 350 0507	1	Filler cap □ 18 - 20
18	0000 350 0900	1	Rope
19	0000 353 0600	1	Hook
20	0000 359 1240	1	Sealing ring

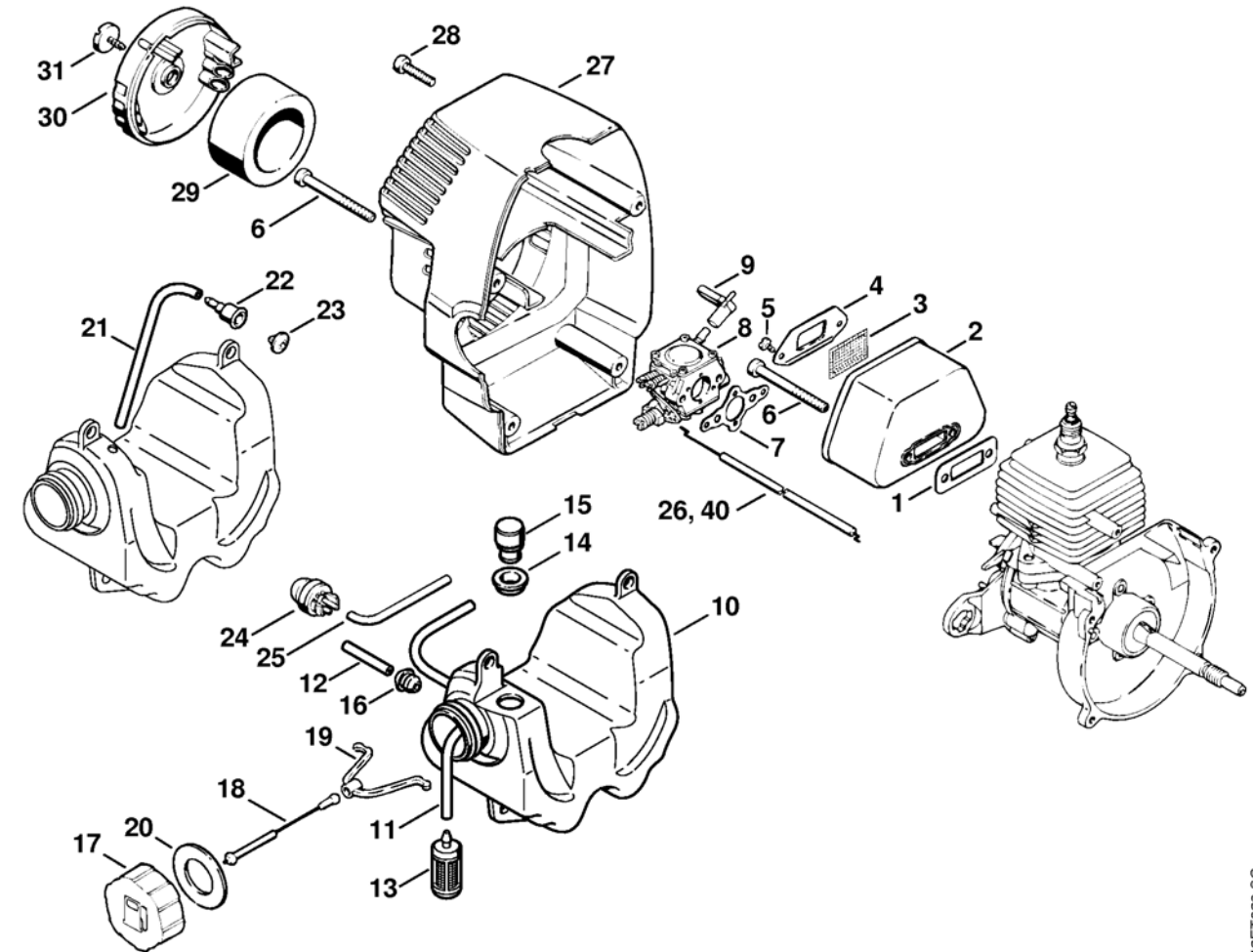
(1) FS 36, (2) FS 40, (3) FS 44, (4) FS 44 R

FS 36, FS 40, FS 44

Printed from MediaCat

Illustration

C Muffler, Shroud



342ET029 SC

Illustration

Muffler, Shroud

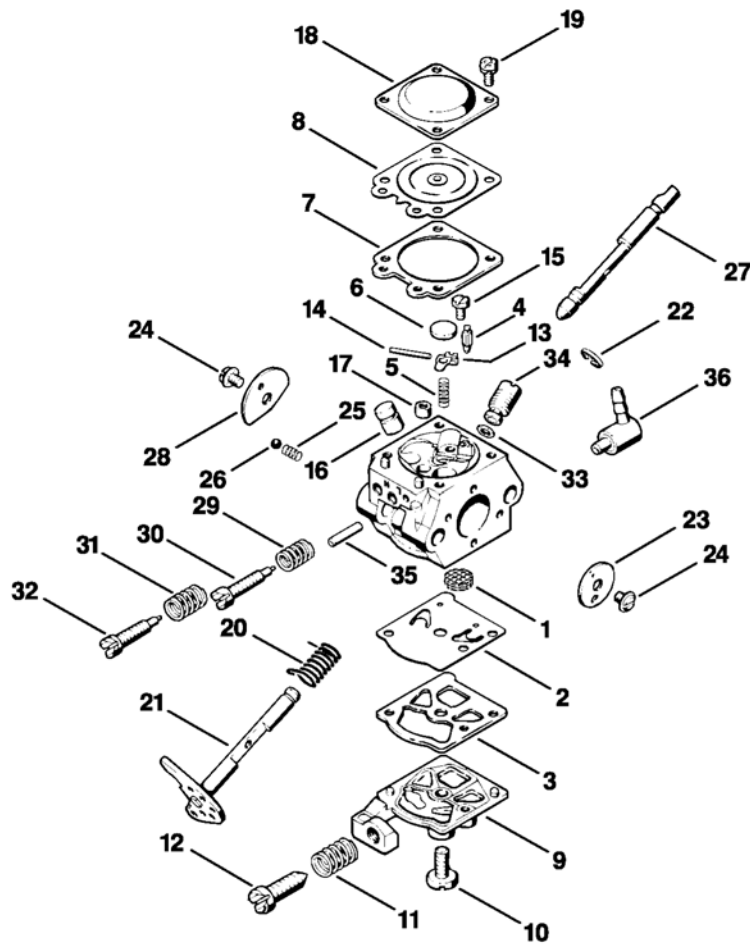
Printed from MediaCat

Reference	Item number	Qty	Description
21	*	1	Hose 3.1x5.7x110 mm (D)
	* 0000 930 2803	1	Hose 3.1x5.7 mm x 1 m (A,B)
22	* 1122 353 9100	1	Connector
23	* 4114 353 1600	1	Valve
24	4130 350 6200	1	Fuel pump
25		1	Hose 2.2x5.4x85 mm (D)
	0000 930 2802	1	Hose 2.2x5.4 mm x 1 m (A,B)
26	4130 180 1101	1	Throttle cable
27	4130 084 0901	1	Shroud
28	9075 478 4155	4	Pan head self-tapping screw IS-D5x24
29	4130 124 0800	1	Filter
30	4130 141 0500	1	Filter cover
31	4130 141 8100	1	Screw
40	* 4130 180 1105	1	Throttle cable (2,3,4) (17.1994)

(1) FS 36, (2) FS 40, (3) FS 44, (4) FS 44 R

FS 36, FS 40, FS 44

Printed from MediaCat



342ET007 L.A

Illustration

D. Carburetor WT-160B

Reference	Item number	Qty	Description
	4130 120 0601	1	Carburetor WT-160 B □ 1 - 36
1	1114 121 7800	1	Strainer
2	1121 121 4801	1	Pump diaphragm
3	1120 129 0905	1	Gasket
4	4116 121 5100	1	Inlet needle
5	1120 122 3001	1	Spring
6	4117 122 9402	1	Plug
7	1120 129 0900	1	Gasket
8	1113 121 4705	1	Metering diaphragm
9	4117 121 0803	1	End cover
10	1114 122 7100	1	Screw
11	4117 122 3006	1	Spring
12	4117 122 6200	1	Idle speed adjustment screw
13	1113 121 5000	1	Inlet control lever
14	1113 121 9200	1	Spindle
15	1114 122 7400	1	Round head screw
16	1120 121 5405	1	Valve jet
17	4130 120 8600	1	Non-return valve
18	1113 121 0800	1	End cover
19	1106 122 7400	4	Round head screw
20	4117 122 3200	1	Torsion spring
21	4130 120 7101	1	Throttle shaft with lever
22	1117 122 9000	1	E-clip
23	4130 121 3300	1	Throttle shutter
24	1110 122 7400	2	Round head screw
25	1116 122 3000	1	Spring
26	1116 122 4200	1	Ball
27	4130 121 3000	1	Choke shaft
28	4130 121 2900	1	Choke shutter

(1) FS 36, (2) FS 40, (3) FS 44, (4) FS 44 R

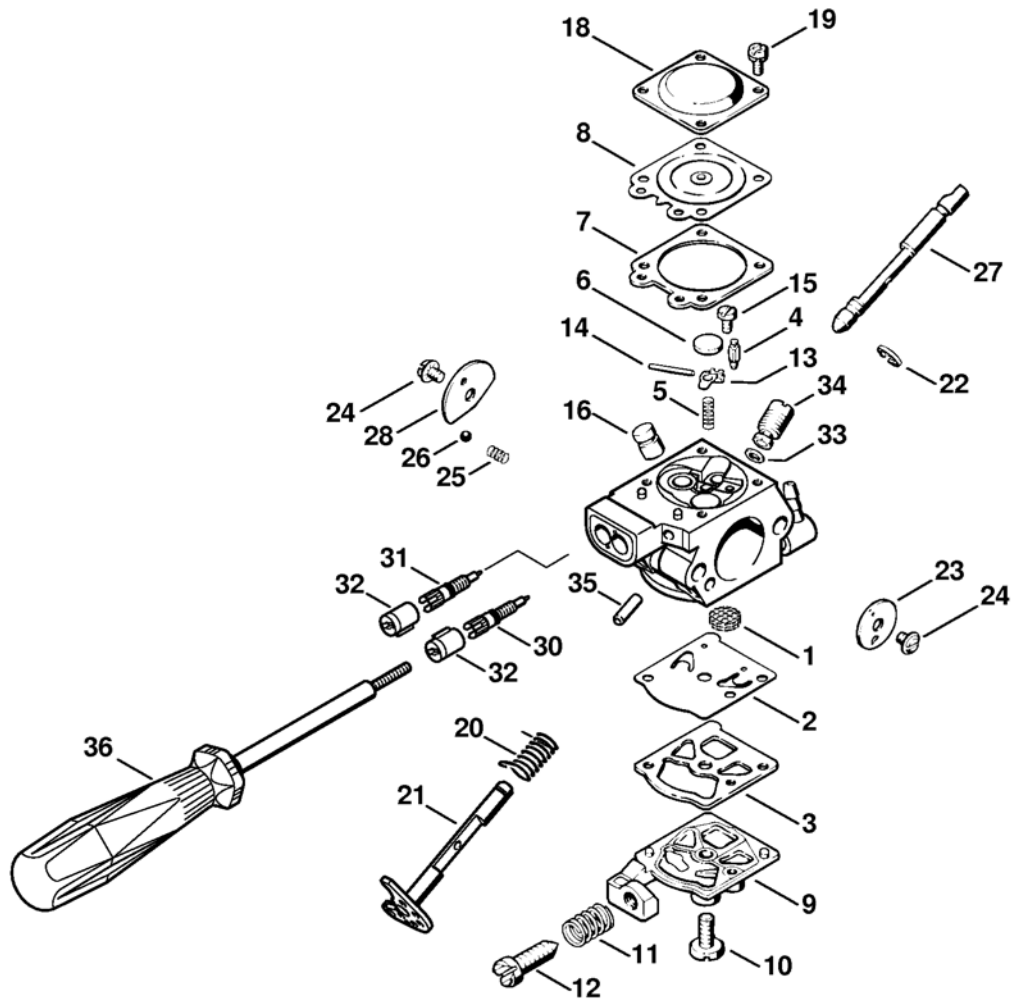
Illustration

D Carburetor WT-160B

Reference	Item number	Qty	Description
29	1115 122 3002	1	Spring
30	1120 122 6805	1	Low speed adjustment screw
31	4117 122 3007	1	Spring
32	4130 122 6700	1	High speed adjustment screw
33	4130 121 8600	1	Washer
34	4130 120 8700	1	Control valve
35	4130 122 3905	1	Connector
36	4130 122 3900	1	Elbow connector
	4130 007 1060	1	Set of carburetor parts □ 2, 3, 7, 8

(1) FS 36, (2) FS 40, (3) FS 44, (4) FS 44 R

Printed from MediaCat



342ET025 SC

Printed from MediaCat

Illustration

E. Carburetor WT-492A (USA)

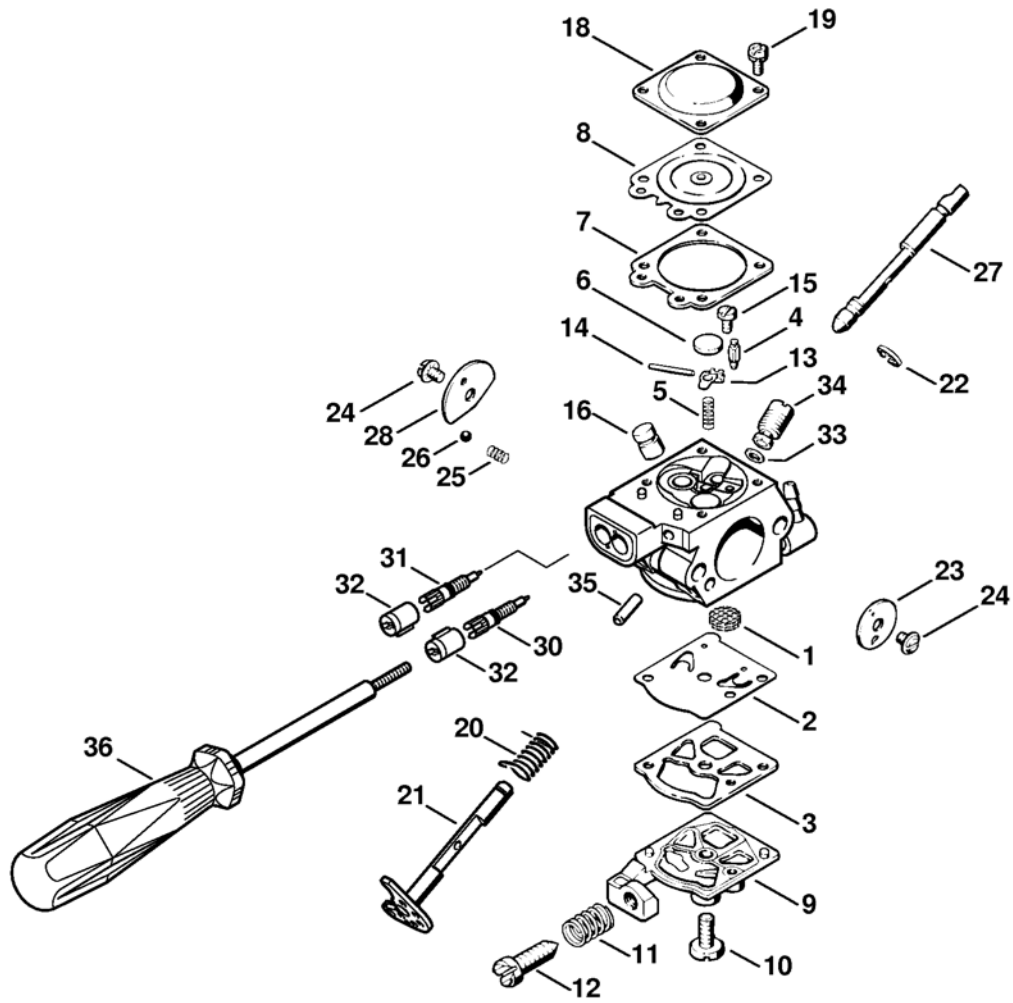
Reference	Item number	Qty	Description
	4130 120 0603	1	Carburetor WT-492A USA
			□ 1 - 35
1	1114 121 7800	1	Strainer
2	1121 121 4801	1	Pump diaphragm
3	1120 129 0905	1	Gasket
4	4116 121 5100	1	Inlet needle
5	1120 122 3001	1	Spring
6	4117 122 9402	1	Plug
7	1120 129 0900	1	Gasket
8	1113 121 4705	1	Metering diaphragm
9	4126 121 0800	1	End cover
10	1114 122 7100	1	Screw
11	4117 122 3006	1	Spring
12	4117 122 6200	1	Idle speed adjustment screw
13	1113 121 5000	1	Inlet control lever
14	1113 121 9200	1	Spindle
15	1114 122 7400	1	Round head screw
16	4130 121 5400	1	Valve jet
18	1113 121 0800	1	End cover
19	1106 122 7400	4	Round head screw

(1) FS 36, (2) FS 40, (3) FS 44, (4) FS 44 R

Illustration

E Carburetor WT-492A (USA)

Printed from MediaCat



342ET025 SC

Printed from MediaCat

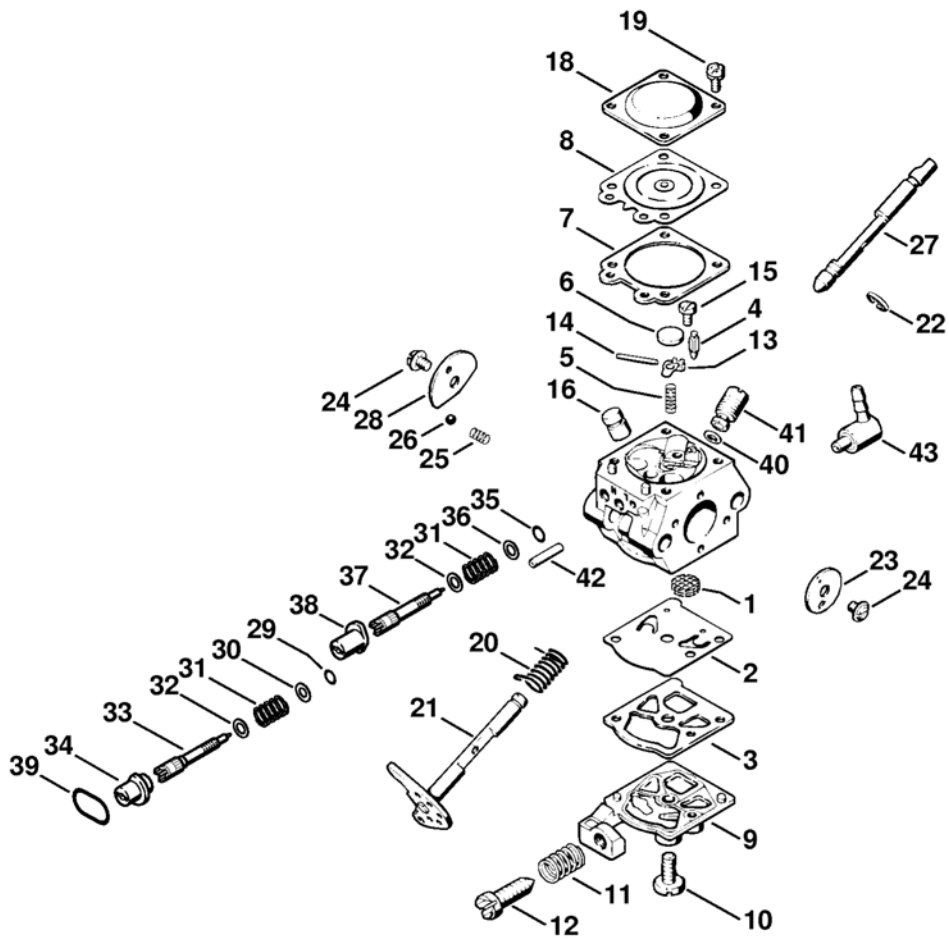
Illustration

E Carburetor WT-492A (USA)

Reference	Item number	Qty	Description
20	4117 122 3200	1	Torsion spring
21	4130 120 7101	1	Throttle shaft with lever
22	1117 122 9000	1	E-clip
23	4130 121 3300	1	Throttle shutter
24	1110 122 7400	2	Round head screw
25	1116 122 3000	1	Spring
26	1116 122 4200	1	Ball
27	4130 121 3000	1	Choke shaft
28	4130 121 2900	1	Choke shutter
30	4203 122 6803	1	Low speed adjustment screw
31	4130 122 6702	1	High speed adjustment screw
32	4203 121 2700	2	Cap
33	4130 121 8600	1	Washer
34	4130 120 8700	1	Control valve
35	4130 122 3905	1	Connector
36	5910 890 4500	1	Puller (B)
	4130 007 1060	1	Set of carburetor parts □ 2, 3, 7, 8

(1) FS 36, (2) FS 40, (3) FS 44, (4) FS 44 R

Printed from MediaCat



350ET013 SC

Printed from MediaCat

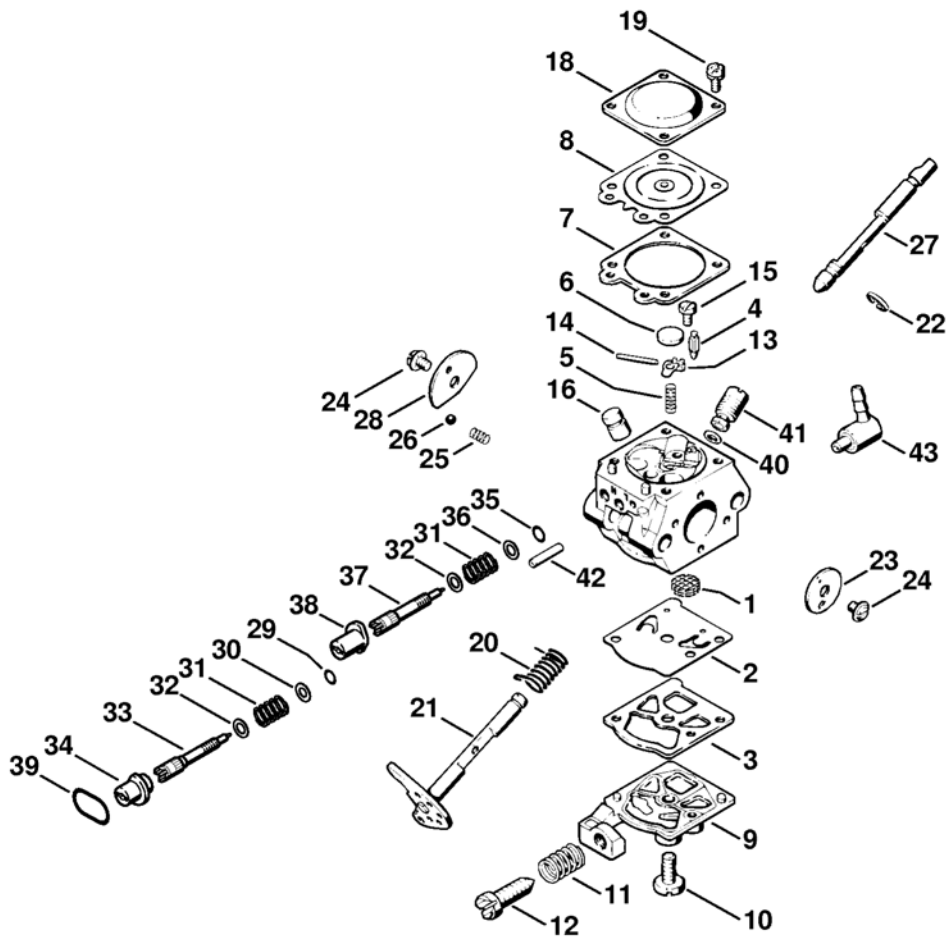
Illustration

F Carburetor WT-327 (11.97)

Reference	Item number	Qty	Description
*	4130 120 0602	1	Carburetor WT-327 (C) USA (11.1997) □ 1 - 43
1 *	1114 121 7800	1	Strainer (11.1997)
2 *	1121 121 4801	1	Pump diaphragm (11.1997)
3 *	1120 129 0905	1	Gasket (11.1997)
4 *	4116 121 5100	1	Inlet needle (11.1997)
5 *	1120 122 3001	1	Spring (11.1997)
6 *	4117 122 9402	1	Plug (11.1997)
7 *	1120 129 0900	1	Gasket (11.1997)
8 *	1113 121 4705	1	Metering diaphragm (11.1997)
9 *	4126 121 0800	1	End cover (11.1997)
10 *	1114 122 7100	1	Screw (11.1997)
11 *	4117 122 3006	1	Spring (11.1997)
12 *	4117 122 6200	1	Idle speed adjustment screw (11.1997)
13 *	1113 121 5000	1	Inlet control lever (11.1997)
14 *	1113 121 9200	1	Spindle (11.1997)
15 *	1114 122 7400	1	Round head screw (11.1997)
16 *	4130 121 5400	1	Valve jet (11.1997)
18 *	1113 121 0800	1	End cover (11.1997)
19 *	1106 122 7400	4	Round head screw (11.1997)

(1) FS 36, (2) FS 40, (3) FS 44, (4) FS 44 R

Printed from MediaCat



350ET013 SC

Printed from MediaCat

Illustration

F. Carburetor WT-327 (11.97)

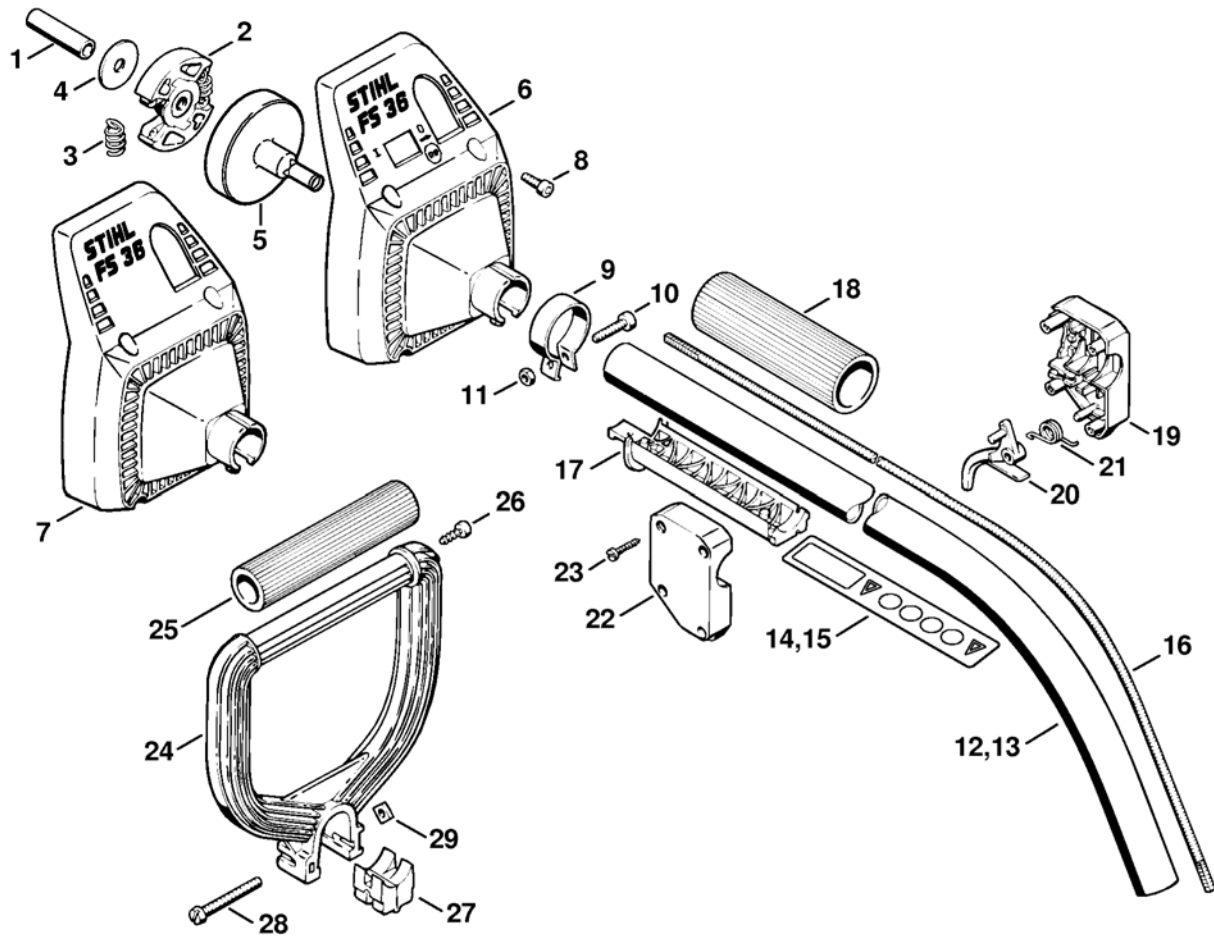
Reference	Item number	Qty	Description
20	* 4117 122 3200	1	Torsion spring (11.1997)
21	* 4130 120 7100	1	Throttle shaft with lever (11.1997)
22	* 1117 122 9000	1	E-clip (11.1997)
23	* 4130 121 3300	1	Throttle shutter (11.1997)
24	* 1110 122 7400	2	Round head screw (11.1997)
25	* 1116 122 3000	1	Spring (11.1997)
26	* 1116 122 4200	1	Ball (11.1997)
27	* 4130 121 3000	1	Choke shaft (11.1997)
28	* 4130 121 2900	1	Choke shutter (11.1997)
29	* 4124 122 3600	1	Sealing ring (11.1997)
30	* 1111 121 8605	1	Washer (11.1997)
31	* 1115 122 3002	2	Spring (11.1997)
32	* 4130 121 8602	2	Washer (11.1997)
33	* 4130 122 6801	1	Low speed adjustment screw (11.1997)
34	* 4130 121 2700	1	Cap (11.1997)
35	* 4130 122 3600	1	Sealing ring (11.1997)
36	* 4130 121 8601	1	Washer (11.1997)
37	* 4130 122 6701	1	High speed adjustment screw (11.1997)
38	* 4130 121 2701	1	Cap (11.1997)
39	* 4130 122 3601	1	Sealing ring (11.1997)
40	* 4130 121 8600	1	Washer (11.1997)
41	* 4130 120 8700	1	Control valve (11.1997)
42	* 4130 122 3905	1	Connector (11.1997)
43	* 4130 122 3900	1	Elbow connector (11.1997)

(1) FS 36, (2) FS 40, (3) FS 44, (4) FS 44 R

Illustration

G Clutch, Drive tube assembly FS 36

Printed from MediaCat



342ET035 SC

Illustration

G Clutch Drive tube assembly FS 36

Printed from MediaCat

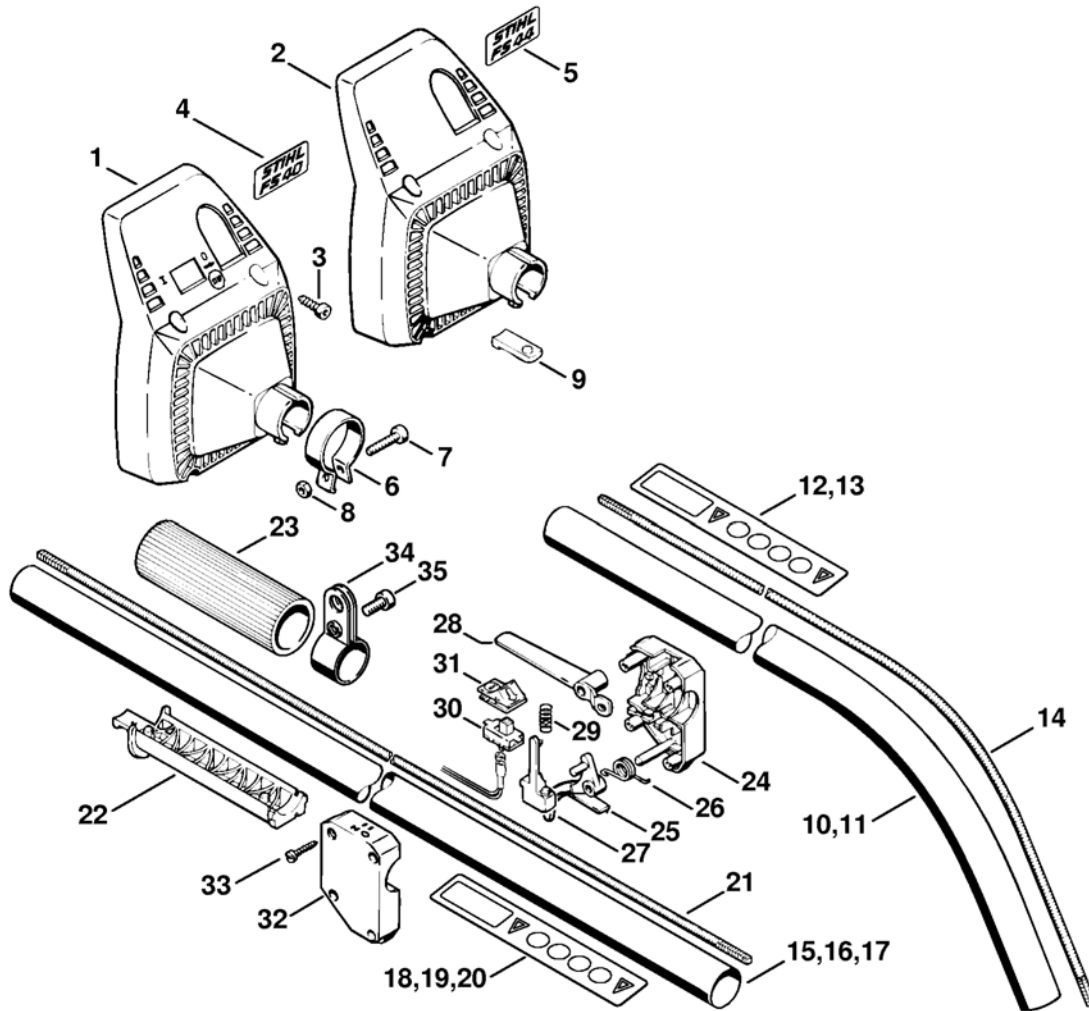
Reference	Item number	Qty	Description
1	4130 162 9100	1	Spacer sleeve
2	4140 160 2000	1	Clutch
			□ 3
3	4140 162 7900	2	Tension spring
4	4140 162 8900	1	Washer
5	4140 160 2903	1	Clutch drum
6	4130 161 0500	1	Clutch housing (1)
7	4130 161 0501	1	Clutch housing (1) D, F
8	9075 478 4155	4	Pan head self-tapping screw IS-D5x24
9	4130 710 6701	1	Hose clamp
			□ 10, 11
10	9022 341 1010	1	Spline screw IS-M5x18
11	9210 260 0700	1	Hexagon nut M5
12	4130 710 7158	1	Drive tube assembly Ø 25.4 mm / 1" (1)
13	4130 710 7131	1	Drive tube assembly Ø 25.4 mm / 1" (1) USA, AUS, CDN
14	0000 967 3726	1	Warning pictogram FS (1)
15	0000 967 3659	1	Warning pictogram FS (1) USA, AUS, CDN
16	4130 711 3200	1	Drive shaft (1)
17	4130 791 7600	1	Support
18	4130 791 2005	1	Handle hose
19	4130 182 1305	1	Handle molding, left (1)
20	4130 182 1000	1	Throttle trigger (1)
21	4130 182 4500	1	Torsion spring
22	4130 182 1300	1	Handle molding, right (1)
23	9099 021 2810	4	Self-tapping screw 3.9x19
24	4130 790 1300	1	Loop handle
			□ 25 - 29
25	4130 791 2000	1	Handle hose
26	9075 478 4115	1	Pan head self-tapping screw IS-D5x16
27	4130 791 6805	1	Clamp
28	9041 116 1430	1	Pan head screw M6x50
29	9222 068 0900	1	Square nut M6

(1) FS 36, (2) FS 40, (3) FS 44, (4) FS 44 R

Illustration

H Drive tube assembly FS 40, FS 44

Printed from MediaCat



342ET036 SC

Printed from MediaCat

Illustration

H Drive tube assembly FS 40, FS 44

Printed from MediaCat

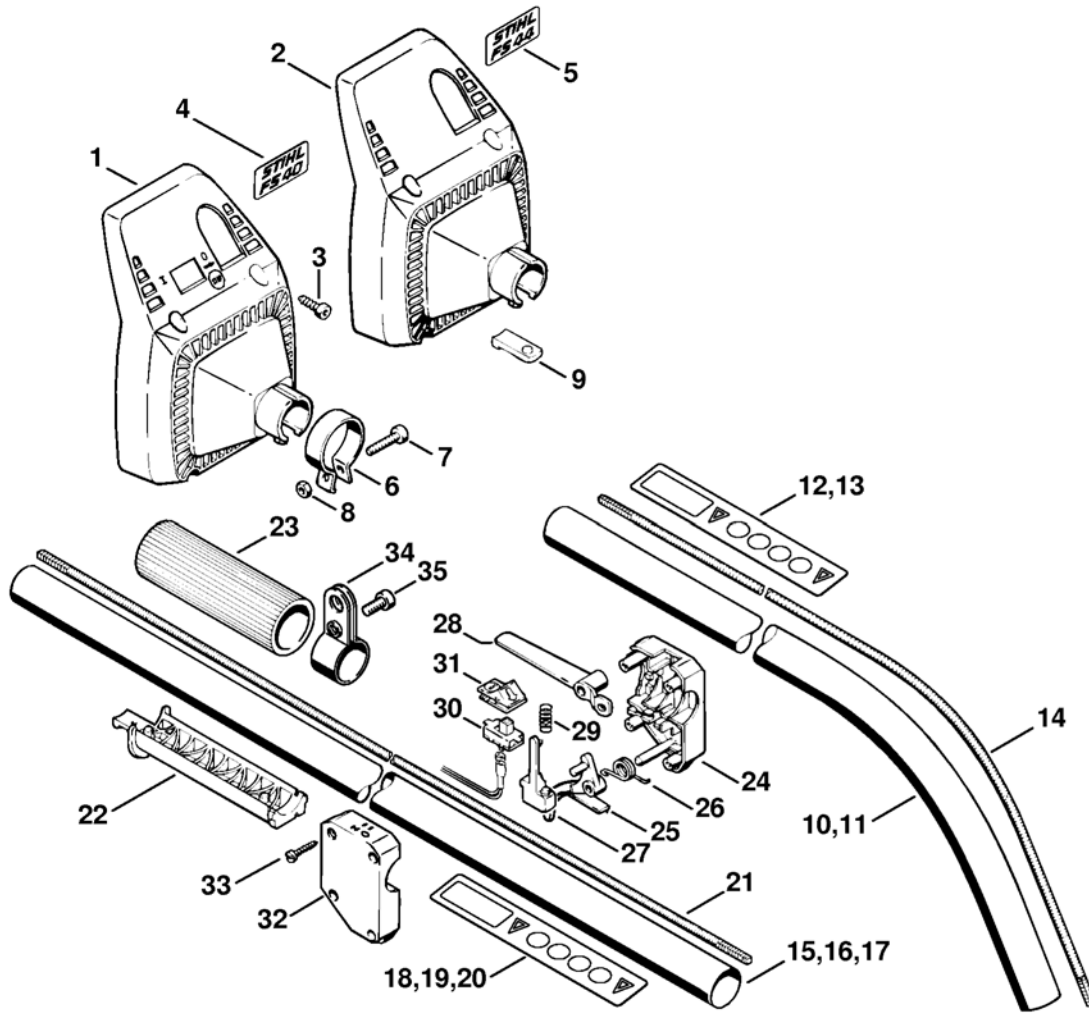
Reference	Item number	Qty	Description
1	4130 161 0500	1	Clutch housing
2	4130 161 0501	1	Clutch housing (2,3,4) D, F, USA
3	9075 478 4155	4	Pan head self-tapping screw IS-D5x24
4	4130 967 1500	1	Model plate FS 40
5	4130 967 1505	1	Model plate FS 44
6	4130 710 6701	1	Hose clamp □ 7, 8
7	9022 341 1010	1	Spline screw IS-M5x18
8	9210 260 0700	1	Hexagon nut M5
9	4130 791 6810	1	Clamp (3,4) D, F, SOA
10	4130 710 7159	1	Drive tube assembly Ø 25.4 mm / 1" (2) □ 12
11	4130 710 7136	1	Drive tube assembly Ø 25.4 mm / 1" (2) USA, AUS, CDN □ 13
12	0000 967 3726	1	Warning pictogram FS
13	0000 967 3659	1	Warning pictogram FS USA, AUS, CDN
14	4137 711 3202	1	Drive shaft (2)
15	4130 710 7160	1	Drive tube assembly Ø 25.4 mm / 1" (3,4) □ 18
16	4130 710 7138	1	Drive tube assembly Ø 25.4 mm / 1" (3) USA, AUS, CDN □ 19
17	4130 710 7137	1	Drive tube assembly Ø 25.4 mm / 1" (4) USA, AUS, CDN □ 20
18	0000 967 3725	1	Warning pictogram FS (3,4)
19	0000 967 3684	1	Warning pictogram FS (3) USA, AUS, CDN
20	0000 967 3659	1	Warning pictogram FS (4) USA, AUS, CDN
21	4140 711 3202	1	Drive shaft (3,4)
22	4130 791 7600	1	Support
23	4130 791 2005	1	Handle hose

(1) FS 36, (2) FS 40, (3) FS 44, (4) FS 44 R

Illustration

H Drive tube assembly FS 40, FS 44

Printed from MediaCat



342ET036 SC

Printed from MediaCat

Illustration

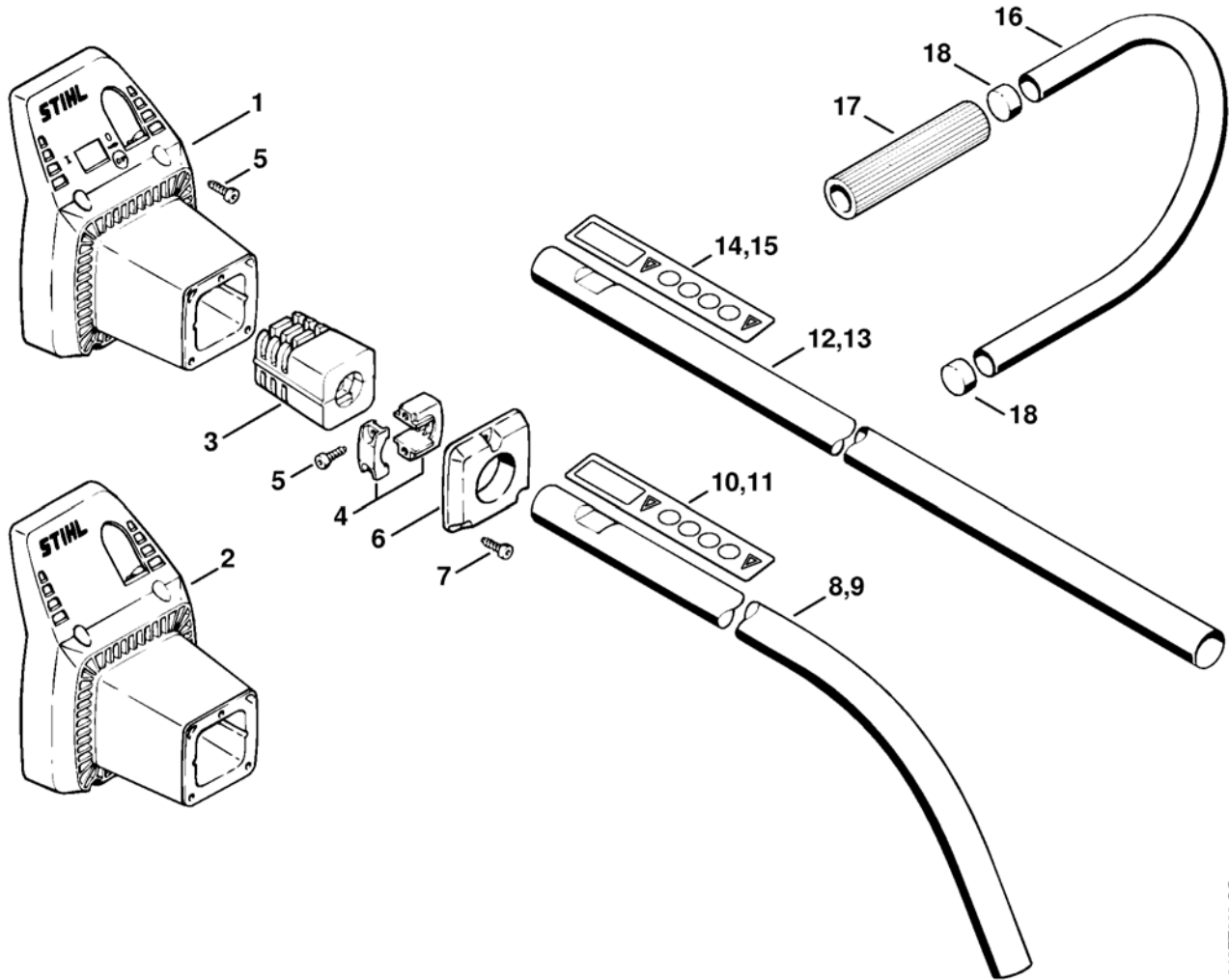
H Drive tube assembly FS 40, FS 44

Reference	Item number	Qty	Description
24	4130 182 1315	1	Handle molding, left
25	4130 182 1000	1	Throttle trigger
26	4130 182 4500	1	Torsion spring
27	4130 182 0805	1	Trigger interlock
28	4130 182 0800	1	Trigger interlock (1,2) D, F
28	4130 182 0800	1	Trigger interlock (3,4)
29	0000 997 0715	1	Compression spring
30	4130 430 0200	1	Stop switch (1,2) D, F
30	4130 430 0200	1	Stop switch (3,4)
31	4130 432 2010	1	Slide (1,2) D, F
31	4130 432 2010	1	Slide (3,4)
32	4130 182 1310	1	Handle housing, right
33	9099 021 2810	4	Self-tapping screw 3.9x19
34	4140 007 1006	1	Hose clamp kit (3,4)
			□ 35
35	9022 341 1270	1	Spline screw IS-M6x14 (3,4)

(1) FS 36, (2) FS 40, (3) FS 44, (4) FS 44 R

Illustration

J Drive tube assembly FS 40, FS 44
(17.94)



342ET038 SC

Illustration

Drive tube assembly FS 40, FS 44

(17.94)

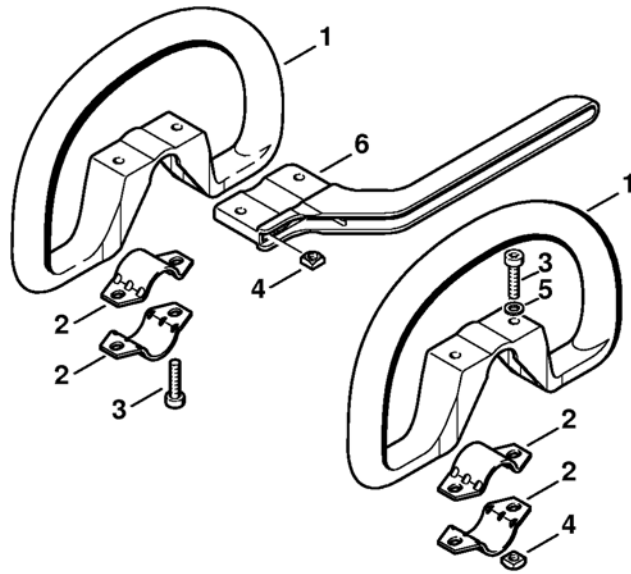
Reference	Item number	Qty	Description
1 *	4130 161 0505	1	Clutch housing (2) → X 28 717 876 (17.1994)
2 *	4130 161 0506	1	Clutch housing (2,3,4) D, F, USA → X 28 717 876 (17.1994)
2 *	4130 161 0510	1	Clutch housing (3,4) → X 28 717 876 (17.1994)
3 *	4130 790 9501	1	Rubber buffer (2,3,4) → X 28 717 876 (17.1994) □ 4, 5
4 *	4130 790 4000	1	Clamp (2,3,4) → X 28 717 876 (17.1994) □ 5
5 *	9075 478 4115	2	Pan head self-tapping screw IS-D5x16 → X 28 717 876 (17.1994)
6 *	4130 162 2800	1	Cap (2,3,4) → X 28 717 876 (17.1994)
7 *	9075 478 4155	3	Pan head self-tapping screw IS-D5x24 → X 28 717 876 (17.1994)
8 *	4130 710 7155	1	Drive tube assembly Ø 25.4 mm / 1" (2) → X 28 717 876 (17.1994) □ 10
9 *	4130 710 7133	1	Drive tube assembly Ø 25.4 mm / 1" (2) USA, AUS, CDN → X 28 717 876 (17.1994) □ 11
10 *	0000 967 3726	1	Warning pictogram FS (2) → X 28 717 876 (17.1994)
11 *	0000 967 3659	1	Warning pictogram FS (2) USA, AUS, CDN → X 28 717 876 (17.1994)
12 *	4130 710 7156	1	Drive tube assembly Ø 25.4 mm / 1" (3) → X 28 717 876 (17.1994) □ 14
13 *	4130 710 7135	1	Drive tube assembly Ø 25.4 mm / 1" (3) USA, AUS, CDN → X 28 717 876 (17.1994) □ 15
14 *	0000 967 3725	1	Warning pictogram FS (2) → X 28 717 876 (17.1994)
15 *	0000 967 3684	1	Warning pictogram FS (3) USA, AUS, CDN → X 28 717 876 (17.1994)
16 *	4130 790 1500	1	J-Handle (39.1995) □ 17, 18
17 *	4130 791 2000	1	Handle hose (39.1995)
18 *	4130 791 1400	2	Plug (39.1995)

(1) FS 36, (2) FS 40, (3) FS 44, (4) FS 44 R

Illustration

K Loop handle

Printed from MediaCat



342ET043 SC

Illustration

K Loop handle

Printed from MediaCat

Reference	Item number	Qty	Description
1	4130 790 1316	1	Loop handle □ 2 - 5
2	4123 791 7400	2	Clamp
3	9022 341 1350	2	Spline screw IS-M6x25
4	9222 068 0900	2	Square nut M6
5	9291 021 0140	2	Washer 6.4
6	4130 791 4400	1	Barrier bar

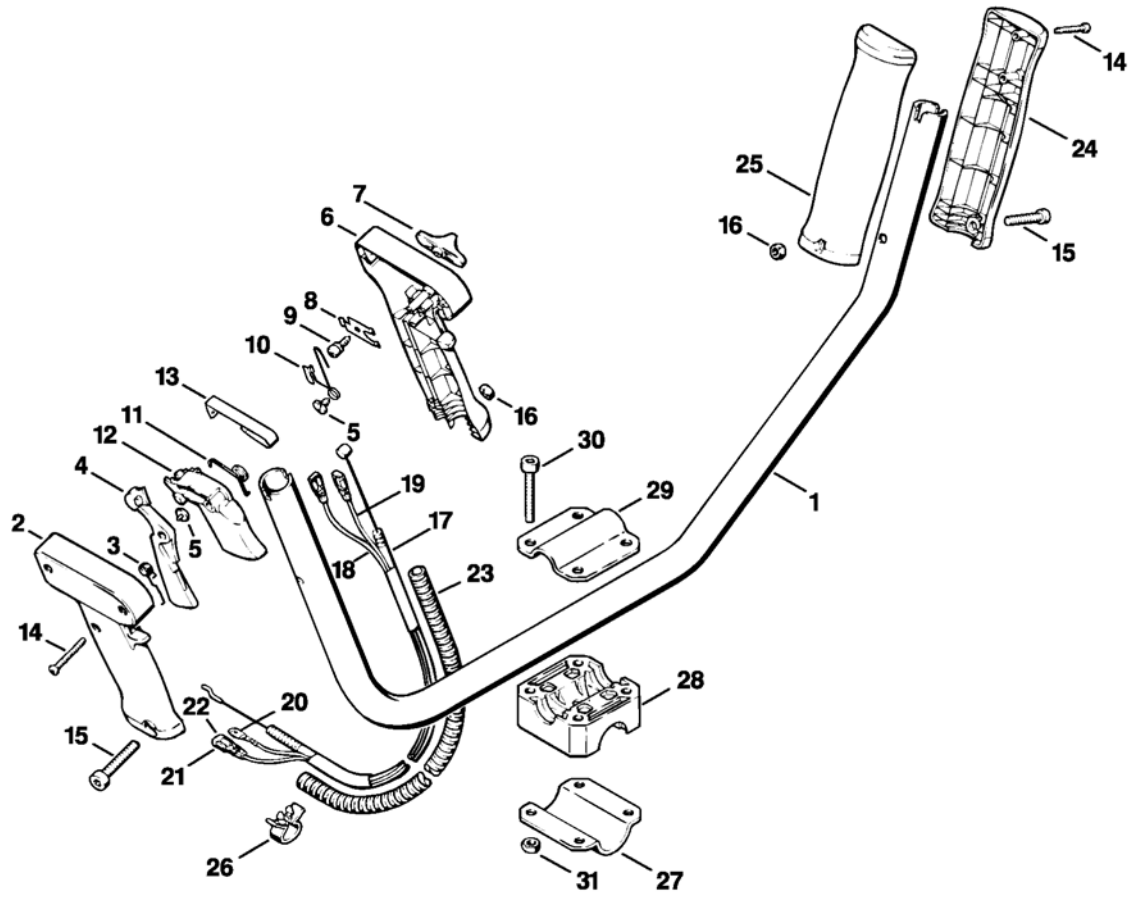
(1) FS 36, (2) FS 40, (3) FS 44, (4) FS 44 R

FS 36, FS 40, FS 44

Printed from MediaCat

Illustration

L Two-handed handlebar FS 44
F/D/SEA



342ET011 LÄ

Illustration

Two-handed handlebar FS 44

Printed from MediaCat

F/D/SEA

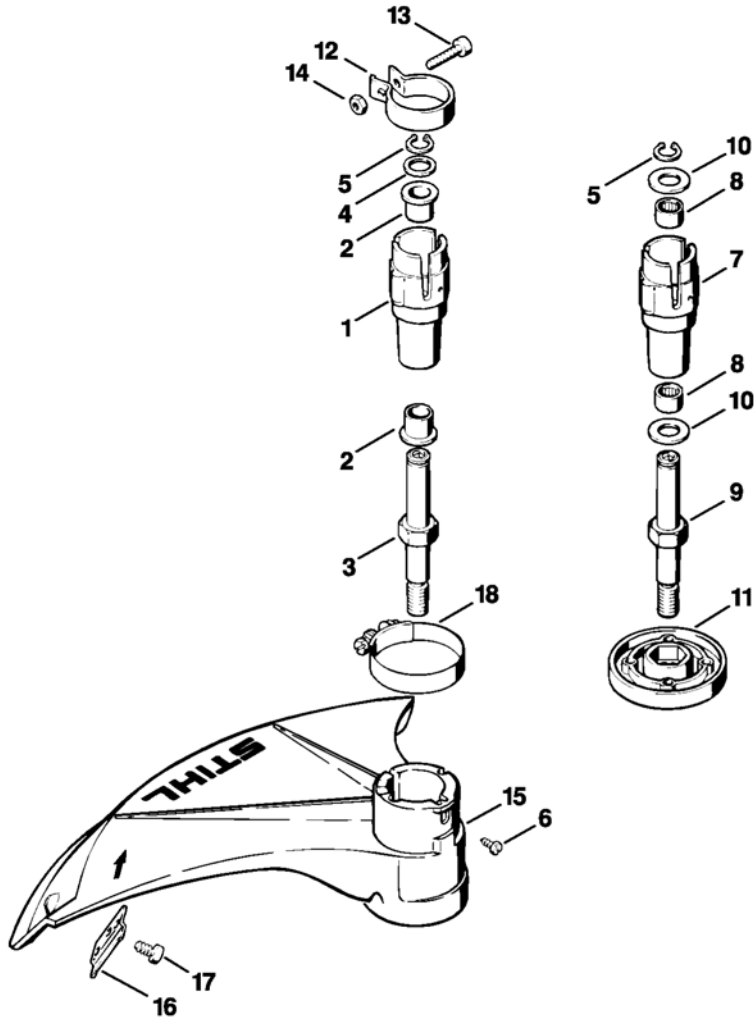
Reference	Item number	Qty	Description
1	4126 791 1700	1	Two-handed handle bar (3)
2	4126 791 0801	1	Handle molding, outer (3)
3	4126 182 4506	1	Torsion spring (3)
4	4126 182 0800	1	Trigger interlock (3)
5	4126 182 6210	2	Collar screw (3)
6	4126 791 0811	1	Handle molding, inner (3)
7	4126 182 1700	1	Slide control (3)
8	4126 182 4700	1	Detent spring (3)
9	4126 182 6200	1	Collar screw (3)
10	4126 442 1600	1	Contact spring (3)
11	4126 182 4500	1	Torsion spring (3)
12	4126 182 1001	1	Throttle trigger (3)
13	4126 442 1610	1	Contact spring (3)
14	9099 021 1890	5	Self-tapping screw 2.9x25 (3)
15	9022 341 1070	2	Spline screw IS-M5x30 (3)
16	9210 260 0700	2	Hexagon nut M5 (3)
17	4130 180 1110	1	Throttle cable (3)
18		1	Short circuit wire 1100 mm / 43" (3)
19		1	Short circuit wire 1130 mm / 44.5" (3)
	0751 010 1110	1	Lead 10 m / 33' (A,B) (3)
20	0751 030 8454	1	Spade terminal (3)
21	0751 030 8404	1	Terminal socket 6.3-1 (3)
22	0751 030 8471	1	Grommet (3)
23		1	Hose 720 mm / 28 3/8" (3)
	4203 711 7201	1	Hose 960 mm / 37 13/16" (A) (3)
	4126 790 1350	1	Handle, left (3)
			□ 14, 24, 25
24		1	Handle molding, outer (D) (3)
25		1	Handle molding, inner (D) (3)
26	4119 791 9400	1	Cable clamp (3)
27	4130 791 0606	1	Clamp (3)
28	4130 791 6800	1	Clamp (3)
29	4130 791 0600	1	Clamp (3)
30	9022 341 1380	4	Spline screw IS-M6x35 (3)
31	* 9210 319 0900	4	Hexagon nut M6 (3)

(1) FS 36, (2) FS 40, (3) FS 44, (4) FS 44 R

Illustration

M Bearing housing FS 36, FS 40

Printed from MediaCat



342ET012 LÄ

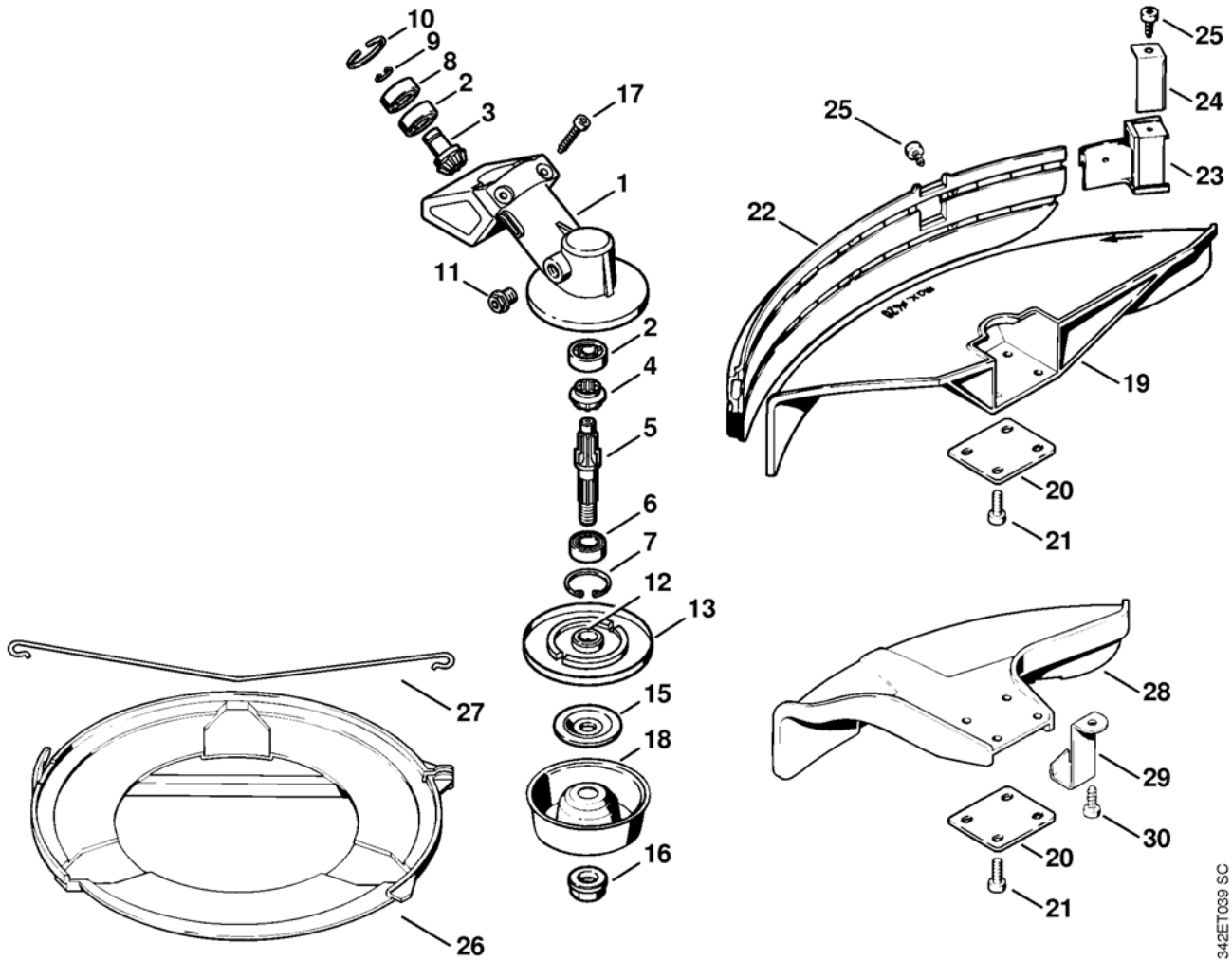
Printed from MediaCat

Illustration

M Bearing housing FS 36, FS 40

Reference	Item number	Qty	Description
1	4130 640 1400	1	Bearing housing (1) □ 2 - 5
2	9533 003 9988	2	Collar plain bearing 1/2"x5/8"x5/8" (1)
3	4130 640 2200	1	Drive shaft (1)
4	9296 021 1612	1	Washer 13x19x1.0 (1)
5	9455 621 1130	1	Circlip 12x1
6	9099 021 2360	1	Self-tapping screw 3.5x9.5
7	4130 640 1405	1	Bearing housing (2) □ 5 - 10
8	9513 003 3210	2	Needle cage 12x16x10 (2)
9	4130 640 2205	1	Drive shaft (2)
10	0000 958 1233	2	Washer (2)
11	4130 713 1501	1	Thrust plate (2)
12	4130 710 6701	1	Hose clamp (1,2) □ 13, 14
13	9022 341 1010	1	Spline screw IS-M5x18 (1,2)
14	9210 260 0700	1	Hexagon nut M5 (1,2)
15	4130 713 4501	1	Deflector (1,2)
16	4130 713 4100	1	Blade (1,2)
17	9074 478 4405	1	Pan head self-tapping screw IS-P6x14 (1,2)
18	9771 021 2760	1	Hose clip Ø 1 7/8x1/2" (1,2)

(1) FS 36, (2) FS 40, (3) FS 44, (4) FS 44 R



342ET039 SC

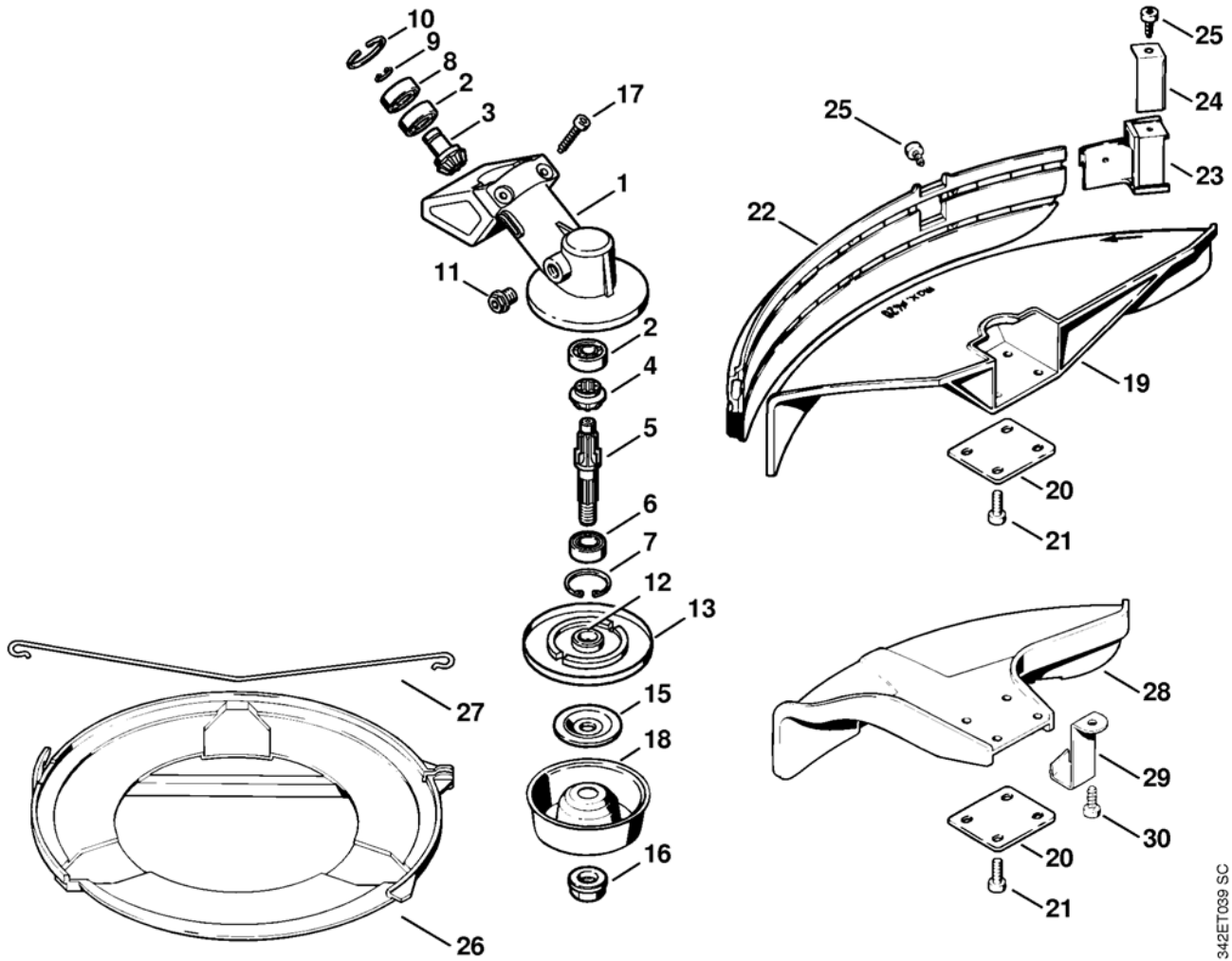
Illustration

N Gear head FS 44

Printed from MediaCat

Reference	Item number	Qty	Description
	4137 640 0100	1	Gear head (3,4) □ 1 - 17
1	4130 641 0305	1	Gear housing (3,4)
2	9503 003 9850	2	Grooved ball bearing 609 (3,4)
	4130 640 7301	1	Set of pinions (3,4) □ 3, 4
3		1	Drive pinion (D) (3,4)
4		1	Spur bevel gear (D) (3,4)
5	4130 642 0601	1	Drive shaft (3,4)
6	9503 003 5190	1	Grooved ball bearing 6001-2RS (3,4)
7	9456 621 3100	1	Circlip 28x1.2 (3,4)
8	9503 003 9853	1	Grooved ball bearing 609-2Z (3,4)
9	9455 621 0750	1	Circlip 9x1 (3,4)
10	9456 621 2660	1	Circlip 24x1.2 (3,4)
11	4119 713 6500	1	Screw plug (3,4)
12	4137 710 3800	1	Thrust plate (3,4) □ 13
13		1	Guard washer (D) (3,4)
15	4130 713 1600	1	Thrust washer (3,4)
16	4126 642 7600	1	Collar nut M10x1 l/h thread (3,4)
17	9075 478 4159	2	Pan head self-tapping screw IS-D5x24 (3,4)
18	4126 713 3100	1	Rider plate (3,4)
19	4119 713 4500	1	Deflector (3,4)
20	4112 716 3100	1	Backing plate (3,4)
21	9022 341 0980	4	Spline screw IS-M5x16 (3,4)
22	4119 716 3200	1	Skirt (3,4)

(1) FS 36, (2) FS 40, (3) FS 44, (4) FS 44 R



342ET039 SC

Illustration

N Gear head FS 44

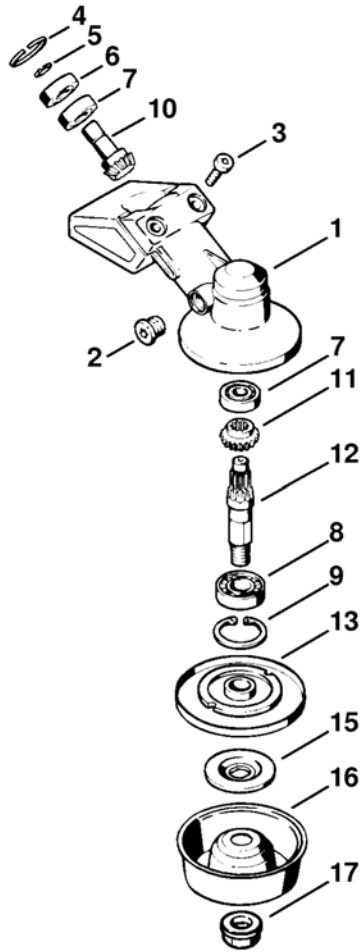
Reference	Item number	Qty	Description
23	4119 710 6000	1	Blade (3,4) □ 24, 25
24	4118 713 4105	1	Blade (3,4)
25	9074 478 4125	2	Pan head self-tapping screw IS-5x14 (3,4)
26	4119 790 3906	1	Transport guard Ø 255 (3) □ 27
27	4119 792 4305	1	Clamping wire (3)
28	4133 007 1002	1	Deflector kit (3) □ 20, 21, 29, 30
29	4133 713 4110	1	Blade (3)
30	9074 478 4405	2	Pan head self-tapping screw IS-P6x14 (3)
	0781 120 1117	1	Gear lubricant 80 g (A,B) (3,4)

(1) FS 36, (2) FS 40, (3) FS 44, (4) FS 44 R

Illustration

O Gear head FS 44 (19.96)

Printed from MediaCat



342ET018 SC

Printed from MediaCat

Illustration

○ Gear head FS 44 (19.96)

Reference	Item number	Qty	Description
*	4130 640 0100	1	Gear head (3,4) → X 34 090 160 (19.1996) □ 1 - 12
1 *	4130 641 0300	1	Gear housing (3,4) → X 34 090 160 (19.1996)
2 *	4119 713 6500	1	Screw plug (3,4) → X 34 090 160 (19.1996)
3 *	9022 371 1020	2	Spline screw IS-M5x20 (3,4) → X 34 090 160 (19.1996)
4 *	9456 621 2440	1	Circlip 22x1 (3,4) → X 34 090 160 (19.1996)
5 *	9452 600 0750	1	Circlip 9.5x0.8 (3,4) → X 34 090 160 (19.1996)
6 *	9507 003 8056	1	Grooved ball bearing 9.5x22.2x7.14 (3,4) → X 34 090 160 (19.1996)
7 *	9507 003 8054	2	Grooved ball bearing 9.5x22.2x7.14 (3,4) → X 34 090 160 (19.1996)
8 *	9503 003 5190	1	Grooved ball bearing 6001-2RS (3,4) → X 34 090 160 (19.1996)
9 *	9456 621 3100	1	Circlip 28x1.2 (3,4) → X 34 090 160 (19.1996)
*	4130 640 7300	1	Set of pinions (3,4) → X 34 090 160 (19.1996) □ 10, 11
10 *		1	Drive pinion (D) (3,4) → X 34 090 160 (19.1996)
11 *		1	Spur bevel gear (D) (3,4) → X 34 090 160 (19.1996)
12 *	4130 642 0610	1	Drive shaft (3,4) → X 34 090 160 (19.1996)
13 *	4126 710 3800	1	Thrust plate (3,4) → X 34 090 160 (19.1996)
15 *	4126 713 1600	1	Thrust washer (3,4) → X 34 090 160 (19.1996)
16 *	4126 713 3100	1	Rider plate (3,4) → X 34 090 160 (19.1996)
17 *	4126 642 7600	1	Collar nut M10x1 l/h thread (3,4) → X 34 090 160 (19.1996)
*	0781 120 1117	1	Gear lubricant 80 g (A,B) (3,4) → X 34 090 160 (19.1996)

(1) FS 36, (2) FS 40, (3) FS 44, (4) FS 44 R

Illustration

P Tools, Extras

Reference	Item number	Qty	Description
1	0812 370 1000	1	Screwdriver T27x120x70
2	4130 893 7800	1	Locking pin (2,3,4)
3	4128 890 3400	1	Combination wrench (B)
4	0000 890 2300	1	Screwdriver (B) (3,4)
5	0000 891 0801	1	Tool roll (B)
6	0000 884 0307	1	Safety glasses (B)
7	4119 710 9001	1	Full harness (B)
			□ 8 - 18
8	4119 710 6300	1	Backplate with strap
9		1	Strap 38x780 mm / 1.5x30.7" (D)
	0000 930 2242	1	Webbing 38 mm x 5 m / 1.5x197" (A,B)
10		1	Strap 25 mm x 1,18 m / 1x46.5" (D)
	0000 930 2241	1	Webbing 25 mm x 10 m / 1" x 33' (A,B)
11	4119 718 6300	2	Slide
12	4119 718 6305	2	Slide
13	4119 718 6310	1	Slide
14	9408 021 4530	12	Rivet shank 4x8x6
15	9409 021 4420	12	Rivet head 4x8
16	4119 718 7400	1	Guard plate
	4119 710 6406	1	Buckle with strap
			□ 17
17	4119 710 6400	1	Buckle
18	4119 710 6906	1	Spring safety hock
19	4130 710 9000	1	Harness (B)

(1) FS 36, (2) FS 40, (3) FS 44, (4) FS 44 R